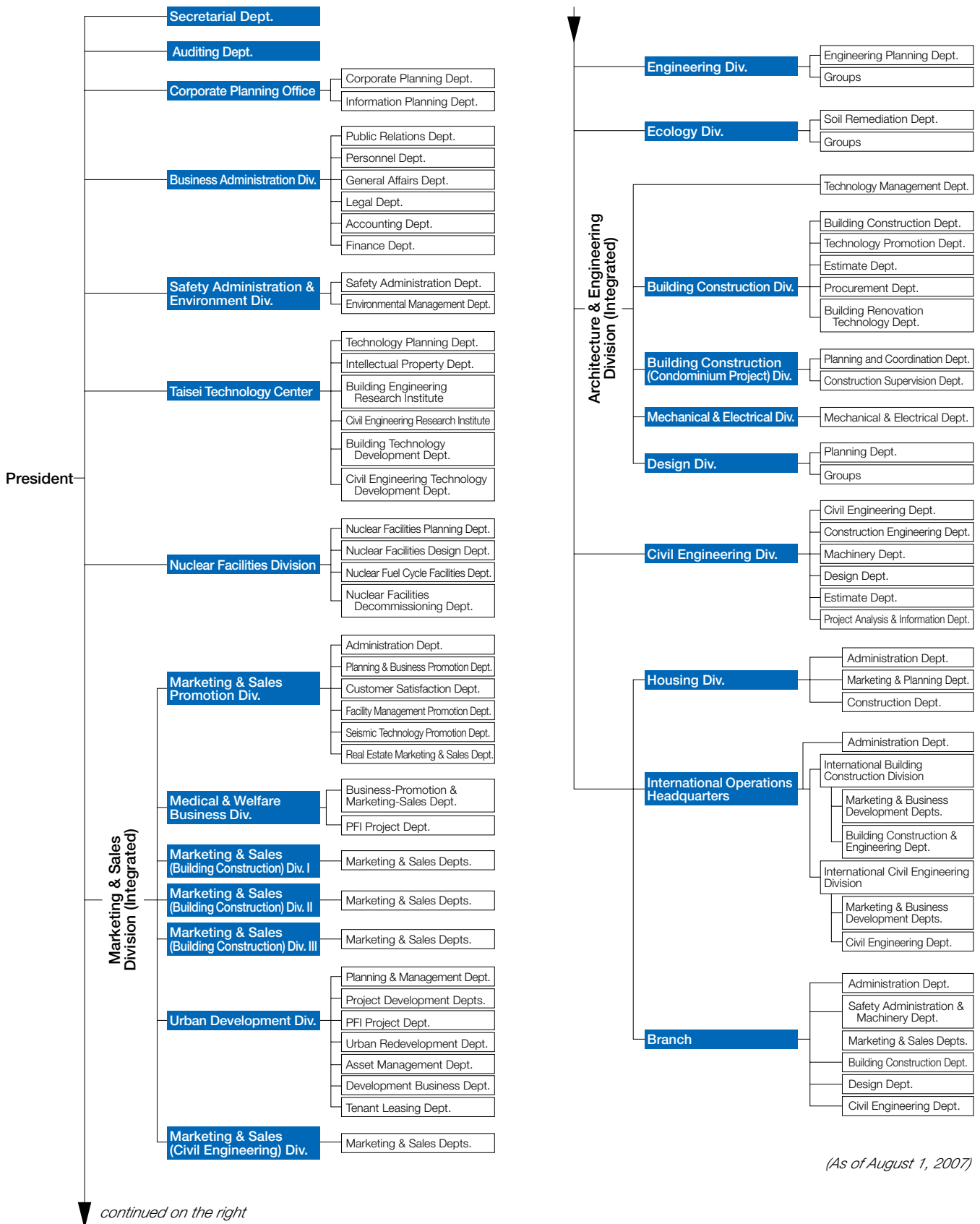


Organization



Corporate Auditor—Auditor's Secretarial Dept.

Corporate Data

Name: Taisei Corporation
Established: 1873
Paid-in Capital: ¥112,448 million
Authorized Shares: 2,200,000,000 shares
Shares Issued: 1,064,802,821 shares
Number of Shareholders: 99,236
Number of Employees: 9,310

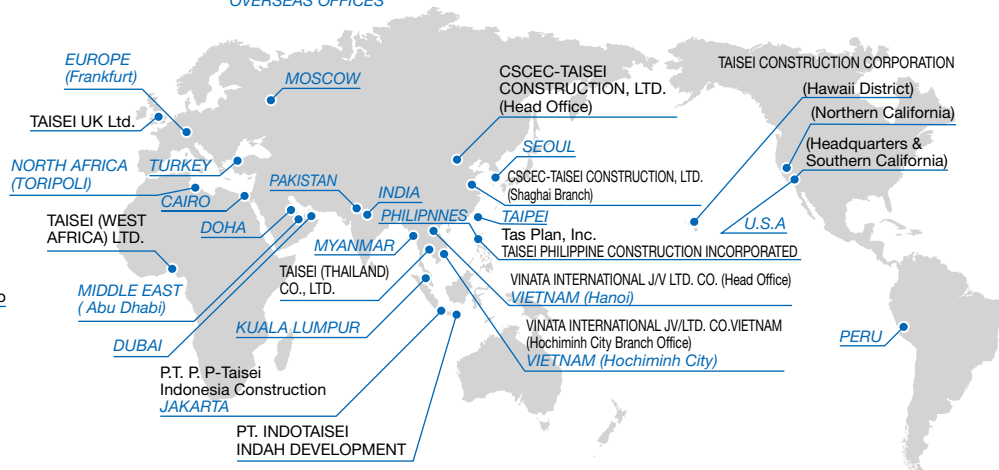
General Meeting of Shareholders: The General Meeting of Shareholders is held within three months of the day immediately following the day on which the account is closed.
Transfer Agent: Mizuho Trust & Banking Co., Ltd.
Head Office: 1-25-1, Nishi-Shinjuku, Shinjuku-ku, Tokyo 163-0606
Phone: +81-3-3348-1111

(As of March 31, 2007)

Domestic Offices:



Overseas Offices: OVERSEAS SUBSIDIARIES & AFFILIATES OVERSEAS OFFICES



Major Subsidiaries and Affiliates

COMPANY	LOCATION	PAID-IN CAPITAL	MAJOR BUSINESSES	EQUITY OWNERSHIP
Subsidiaries				
Taisei Rotec Corporation	Tokyo, Japan	¥ 11,305 million	Road construction and construction material sales	58.5%
Yuraku Real Estate Co., Ltd.	Tokyo, Japan	¥ 13,625 million	Real estate sales and insurance	57.6%
Taisei U-Lec Co, Ltd.	Tokyo, Japan	¥ 7,280 million	Construction	100.0%
Taisei Setsubi Co., Ltd.	Tokyo, Japan	¥ 625 million	Servicing of air-conditioning, plumbing and electric installations	100.0%
Taisei Service Co., Ltd.	Tokyo, Japan	¥ 100 million	Real estate management and security	100.0%
Seiwa Renewal Works Co., Ltd.	Tokyo, Japan	¥ 300 million	Construction	100.0%
Taisei Housing Corporation	Tokyo, Japan	¥ 100 million	Housing construction	100.0%
Taisei Construction Corporation	Cypress, CA, U.S.A.	US\$ 41.3 million	Construction	100.0%
CSCEC-TAISEI Construction, Ltd.	Beijing, China	RMB 50 million	Construction	50.0%
Affiliates				
VSL Japan Ltd.	Tokyo, Japan	¥ 100 million	Construction method licensing; sales and leasing of equipment, etc.	22.9%
Taisei Philippine Construction, Inc.	Makati City, Philippines	P 12.5 million	Construction	40.0%