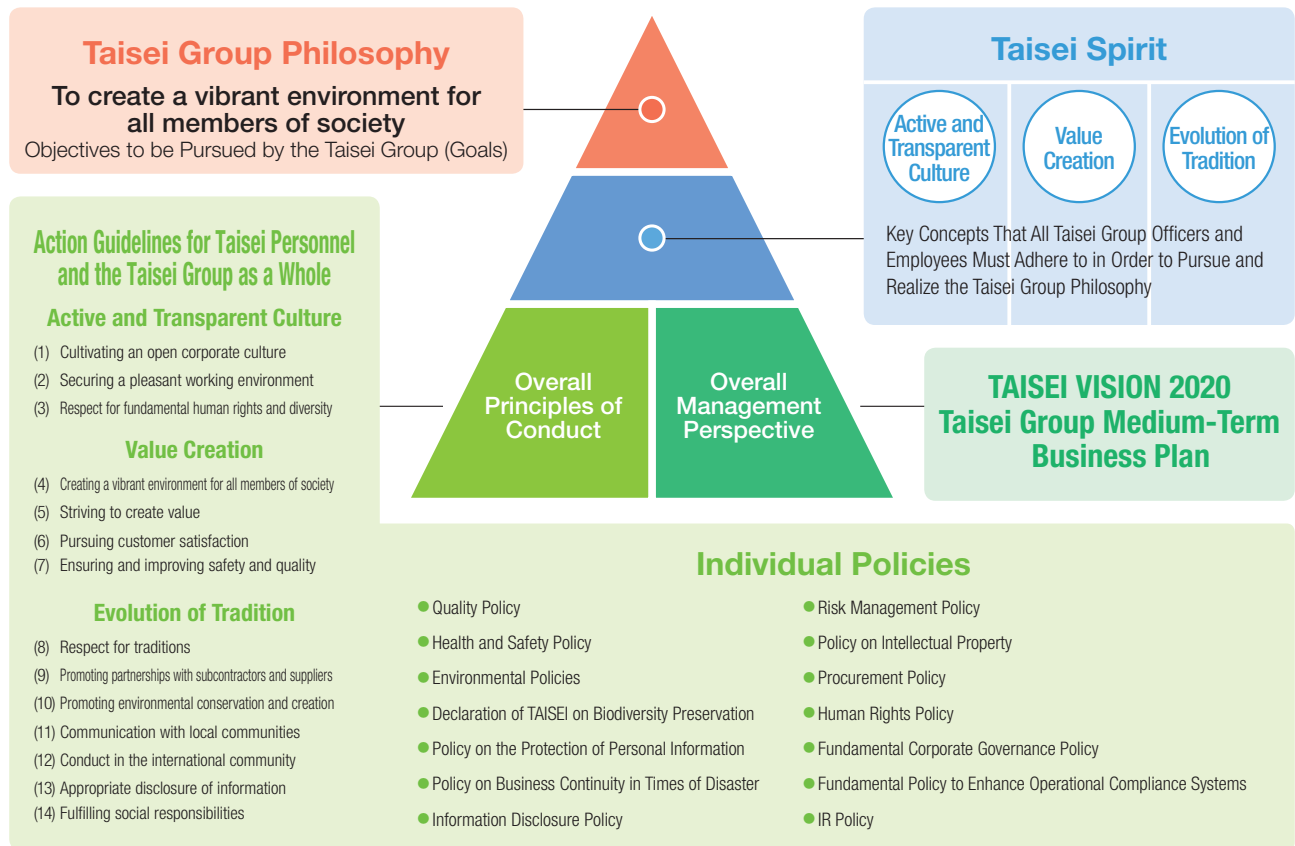


Aiming to Implement the Taisei Group Philosophy of Sustainable Development Together with Society

CSR & Our Structure of Values and Policies

In order to pursue the Group Philosophy of “To create a vibrant environment for all members of society,” all officers and employees of the Taisei Group share in the Taisei Spirit, and we aim to implement sustainable development and deliver new value to society by leading the business on the basis of the Overall Principles of Conduct (Group Action Guidelines, Individual Policies) and the Overall Management Perspective (TAISEI VISION 2020, Medium-term Business Plan).



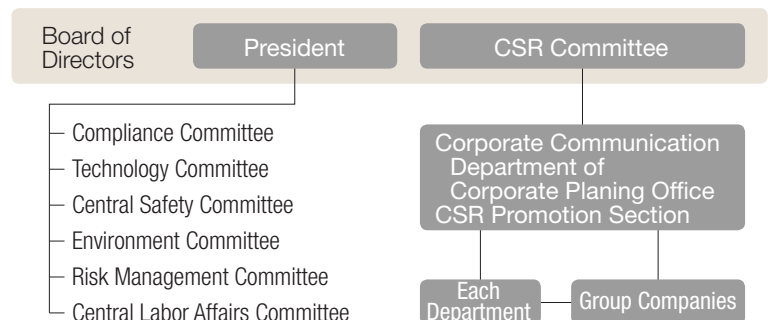
System for Promoting CSR

A CSR committee has been established to promote CSR activities within the Taisei Group.

The CSR Committee includes 5 Taisei board members and officers.

The CSR Promotion Section educates and gives guidance on CSR, and exchanges opinions with the various departments and Group companies to promote the Group's CSR activities.

Diagram of CSR Promotion System

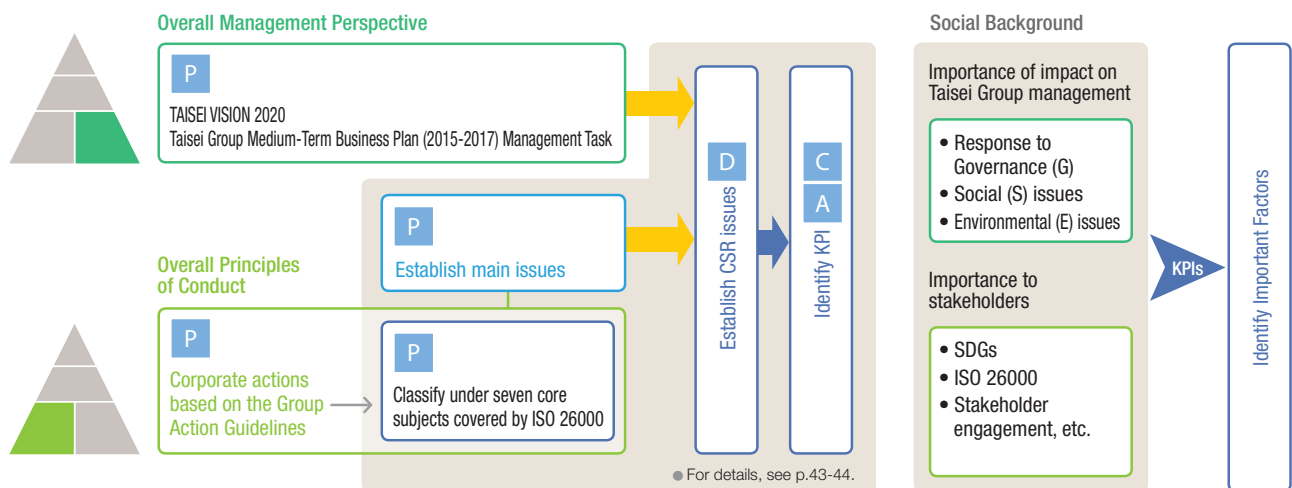


CSR Management

The Taisei Group implements CSR management in line with the ISO 26000 international standard for corporate social responsibility at organizations. In order to implement the Group Philosophy, we identify the CSR issues based on both the Overall Principles of Conduct and the Overall Management Perspective and make every effort to improve CSR activities through the P-D-C-A (Plan-Do-Check-Act) cycle.

Identification of KPI *1

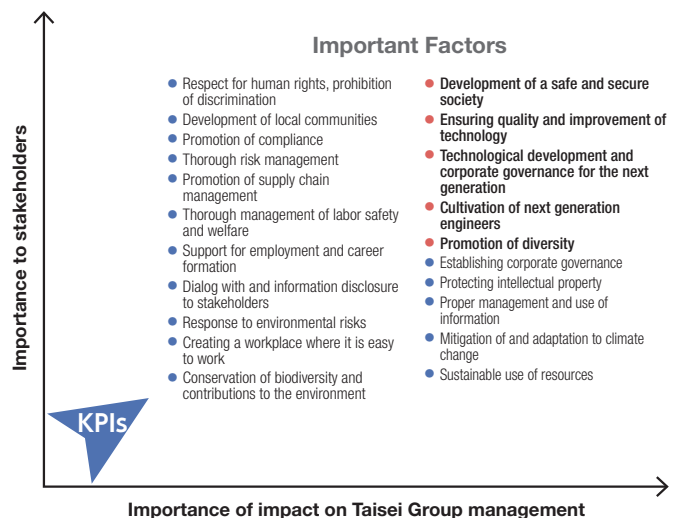
In Overall Principles of Conduct, we categorize the Group Action Guidelines according to the seven core subjects *2 covered by the ISO 26000 to identify the main issues. In the Overall Management Perspective, we set out management issues in line with the external environment. We consider the relevance and impact of the issues identified based on the Overall Principles of Conduct and the Overall Management Perspective on society and the Group when we determine the CSR issues. Since FY2011, we have identified Key Performance Indicators (KPI) to confirm and improve these items.



Identify Important Factors (Materiality)

To identify important factors, the CSR issues and KPI identified in the process described above are reevaluated from the dual perspectives of the importance to stakeholders and the importance of the impact on Taisei Group management. For a perspective on the importance to stakeholders, we consult the level of interest in creating a sustainable society based on social trends (SDGs*3, ISO 26000, etc.).

In the future, we intend to take into account the opinions of external experts on methods of evaluating important factors and the result of identification and make important factors clearer in collaboration with the CSR Committee and the relevant in-house departments.



● Important factors in the interview with top management are shown in bold.

*1 KPI: Key Performance Indicator

*2 ISO 26000 themes 7 core subjects: 1.Organization Governance 2.Fair Operating Practices 3.Consumer Issues 4.Community Involvement and Development 5.Human Rights and Labor Practices Social Dialogue 6.Labor Practices 7.The Environment

*3 SDGs: The acronym of Sustainable Development Goals. At the "United National Sustainable Development Summit 2015," member countries adopted SDGs comprising 17 objectives and 169 targets to accomplish on a global basis.

Taisei Corporation KPIs

	P	D	
	ISO 26000 themes 7 core subjects	Main issues	CSR issues
Governance Report (G)	1.Organization Governance	<ul style="list-style-type: none"> Corporate governance and internal controls Risk management Stakeholder engagement 	<ul style="list-style-type: none"> Spreading and consolidating the Group philosophy Initiatives for business continuity planning (BCP) Dialog with stakeholders
	2.Fair Operating Practices	<ul style="list-style-type: none"> Promotion of compliance Supply chain management Protection, management and use of intellectual property Measures for information security 	<ul style="list-style-type: none"> Improvement in compliance awareness Promotion of CSR procurement Practice of intellectual property strategy Measures to prevent information leakage Improvement in information security awareness
Social Report (S)	3.Consumer Issues	<ul style="list-style-type: none"> Ensuring quality and raising customer satisfaction Innovation management 	<ul style="list-style-type: none"> Thorough familiarization with quality control standards and procedures Obtaining rights to technologies that solve social issues Development and providing technologies to solve social issues
	4.Community Involvement and Development	<ul style="list-style-type: none"> Contributions to local communities 	<ul style="list-style-type: none"> Promotion of community contribution activities Expansion of employee volunteers
	5.Human Rights and Labor Practices	<ul style="list-style-type: none"> Respect for human rights Diversity Initiatives Creating a pleasant workplace Promotion of human resource development 	<ul style="list-style-type: none"> Human rights education activities Promotion of diversity Supporting the balance between work and life Support for employees' career development
	6.Labor Practices	<ul style="list-style-type: none"> Improvement in safety and health standards Horizontal propagation of accident and damage prevention 	<ul style="list-style-type: none"> Improvement of Safety and Health Standards Thoroughgoing occupational health and safety management
Environmental Report (E)	7.The Environment	<ul style="list-style-type: none"> Environmental management activities Response to global warming Efficient utilization of resources Conservation of biodiversity Response to environmental risk Promotion of technical development Comprehensive environmental activities 	<ul style="list-style-type: none"> Contribution to realizing a low carbon society Promotion of 3R activities Promotion of green procurement Proper management of construction waste Providing environmentally friendly technologies

*1 Until 2014, the coverage of the survey is Taisei Corporation (domestic). From 2015, the coverage of the survey is Overseas Business offices (Taiwan).
 *2 Until 2013, Numbers taking leave for childcare (female). From 2014, change to rate of returning to work from childcare leave

	C	A					
	KPIs	FY2011 results	FY2012 results	FY2013 results	FY2014 results	FY2015 targets / results	FY2016 targets
	<ul style="list-style-type: none"> ●Rate of implementation of e-learning regarding the Group philosophy ●Rate of participation in the Large-Scale Disaster Drill ●Number of dialogs 	90.5%	97.8%	91.1%	87.9%	100% / 94.1%	100%
	<ul style="list-style-type: none"> ●Compliance training participation rate ●Number of branches training executed for compliance to the sub-contractor ●Number of companies monitored for CSR procurement *1 ●Number of training regarding intellectual property rights ●Number of major information security accidents ●Number of times education in information security implemented in all companies 	100%	100%	100%	92.3%	100% / 90.8%	100%
	<ul style="list-style-type: none"> ●Customer satisfaction surveys (Civil Engineering) ●Customer satisfaction surveys (Building Construction) ●Number of patent applications filed ●Number of patents right ●Number of media announcements regarding technical development and application projects 	12 branches	12 branches	12 branches	12 branches	12 branches / 12 branches	12 branches
	<ul style="list-style-type: none"> ●Number of environmental and social contribution activities ●Number of employees participating as volunteers 	—	—	160 companies	364 companies	10 companies / 10 companies	100 companies
	<ul style="list-style-type: none"> ●Rate of attendance at human rights training ●Numbers attending female leadership development training ●Number of female managers ●Number of female supervisors or above ●Rate of employment of handicapped persons ●Number of re-employed ●Numbers taking leave for childcare (male) ●Rate of returning to work from childcare leave (female)*2 ●Numbers taking leave when their spouse gives birth ●Numbers taking nursing care leave (male) ●Numbers taking nursing care leave (female) ●Number of participants at care giving seminars ●Rate of paid leave utilization ●Rate of refresh leave utilization ●Rate of milestone leave utilization ●Training hours per person ●Number of trainees at overseas sites, etc. ●Number of trainees at overseas training organizations 	31 times	36 times	40 times	32 times	30 times / 30 times	30 times
	<ul style="list-style-type: none"> ●Number of fatal accidents*3 ●Frequency rates*3,4 	0 cases	0 cases	1 cases	0 cases	0 cases / 4cases	0 cases
	<ul style="list-style-type: none"> ●Rate of reduction of predicted CO₂ emissions in the building operation stage ●Rate of reduction CO₂ emissions in construction stage ●Decrease construction waste final disposal rate*5 ●Rate of green procurement ●Rate of use of Electronic Manifest System ●Number of media announcements regarding environmental technology development and application projects 	12 times	16 times	13 times	19 times	15 times / 26 times	15 times
	<ul style="list-style-type: none"> ●Number of fatal accidents*3 ●Frequency rates*3,4 	779 cases	1,048 cases	1,076 cases	1,308 cases	800 cases / 1,116cases	1,000 cases
	<ul style="list-style-type: none"> ●Rate of attendance at human rights training ●Numbers attending female leadership development training ●Number of female managers ●Number of female supervisors or above ●Rate of employment of handicapped persons ●Number of re-employed ●Numbers taking leave for childcare (male) ●Rate of returning to work from childcare leave (female)*2 ●Numbers taking leave when their spouse gives birth ●Numbers taking nursing care leave (male) ●Numbers taking nursing care leave (female) ●Number of participants at care giving seminars ●Rate of paid leave utilization ●Rate of refresh leave utilization ●Rate of milestone leave utilization ●Training hours per person ●Number of trainees at overseas sites, etc. ●Number of trainees at overseas training organizations 	258 people	247 people	176 people	189 people	150 people / 199 people	200people
	<ul style="list-style-type: none"> ●Rate of reduction of predicted CO₂ emissions in the building operation stage ●Rate of reduction CO₂ emissions in construction stage ●Decrease construction waste final disposal rate*5 ●Rate of green procurement ●Rate of use of Electronic Manifest System ●Number of media announcements regarding environmental technology development and application projects 	100%	100%	100%	100%	100% / 93.8%	100%
	<ul style="list-style-type: none"> ●Rate of reduction of predicted CO₂ emissions in the building operation stage ●Rate of reduction CO₂ emissions in construction stage ●Decrease construction waste final disposal rate*5 ●Rate of green procurement ●Rate of use of Electronic Manifest System ●Number of media announcements regarding environmental technology development and application projects 	26 people	26 people	47 people	65 people	60 people / 66 people	60 people
	<ul style="list-style-type: none"> ●Rate of reduction of predicted CO₂ emissions in the building operation stage ●Rate of reduction CO₂ emissions in construction stage ●Decrease construction waste final disposal rate*5 ●Rate of green procurement ●Rate of use of Electronic Manifest System ●Number of media announcements regarding environmental technology development and application projects 	—	30 people	31 people	39 people	45 people / 53 people	56 people
	<ul style="list-style-type: none"> ●Rate of reduction of predicted CO₂ emissions in the building operation stage ●Rate of reduction CO₂ emissions in construction stage ●Decrease construction waste final disposal rate*5 ●Rate of green procurement ●Rate of use of Electronic Manifest System ●Number of media announcements regarding environmental technology development and application projects 	—	133 people	159 people	183 people	220 people / 232 people	265 people
	<ul style="list-style-type: none"> ●Rate of reduction of predicted CO₂ emissions in the building operation stage ●Rate of reduction CO₂ emissions in construction stage ●Decrease construction waste final disposal rate*5 ●Rate of green procurement ●Rate of use of Electronic Manifest System ●Number of media announcements regarding environmental technology development and application projects 	1.88%	1.95%	2.05%	2.07%	2.00%/2.08%	2.00%
	<ul style="list-style-type: none"> ●Rate of reduction of predicted CO₂ emissions in the building operation stage ●Rate of reduction CO₂ emissions in construction stage ●Decrease construction waste final disposal rate*5 ●Rate of green procurement ●Rate of use of Electronic Manifest System ●Number of media announcements regarding environmental technology development and application projects 	676 people	582 people	643 people	654 people	670 people / 673 people	670 people
	<ul style="list-style-type: none"> ●Rate of reduction of predicted CO₂ emissions in the building operation stage ●Rate of reduction CO₂ emissions in construction stage ●Decrease construction waste final disposal rate*5 ●Rate of green procurement ●Rate of use of Electronic Manifest System ●Number of media announcements regarding environmental technology development and application projects 	2 people	1 people	4 people	2 people	2 people / 4 people	5 people
	<ul style="list-style-type: none"> ●Rate of reduction of predicted CO₂ emissions in the building operation stage ●Rate of reduction CO₂ emissions in construction stage ●Decrease construction waste final disposal rate*5 ●Rate of green procurement ●Rate of use of Electronic Manifest System ●Number of media announcements regarding environmental technology development and application projects 	(27 people)	(37 people)	(31 people)	93.8%	95% / 100%	95%
	<ul style="list-style-type: none"> ●Rate of reduction of predicted CO₂ emissions in the building operation stage ●Rate of reduction CO₂ emissions in construction stage ●Decrease construction waste final disposal rate*5 ●Rate of green procurement ●Rate of use of Electronic Manifest System ●Number of media announcements regarding environmental technology development and application projects 	70 people	76 people	97 people	88 people	80 people / 89 people	85 people
	<ul style="list-style-type: none"> ●Rate of reduction of predicted CO₂ emissions in the building operation stage ●Rate of reduction CO₂ emissions in construction stage ●Decrease construction waste final disposal rate*5 ●Rate of green procurement ●Rate of use of Electronic Manifest System ●Number of media announcements regarding environmental technology development and application projects 	30 people	36 people	46 people	49 people	50 people / 68 people	60 people
	<ul style="list-style-type: none"> ●Rate of reduction of predicted CO₂ emissions in the building operation stage ●Rate of reduction CO₂ emissions in construction stage ●Decrease construction waste final disposal rate*5 ●Rate of green procurement ●Rate of use of Electronic Manifest System ●Number of media announcements regarding environmental technology development and application projects 	85 people	82 people	107 people	99 people	100 people / 111 people	100 people
	<ul style="list-style-type: none"> ●Rate of reduction of predicted CO₂ emissions in the building operation stage ●Rate of reduction CO₂ emissions in construction stage ●Decrease construction waste final disposal rate*5 ●Rate of green procurement ●Rate of use of Electronic Manifest System ●Number of media announcements regarding environmental technology development and application projects 	—	—	—	239 people	250 people / 358 people	350 people
	<ul style="list-style-type: none"> ●Rate of reduction of predicted CO₂ emissions in the building operation stage ●Rate of reduction CO₂ emissions in construction stage ●Decrease construction waste final disposal rate*5 ●Rate of green procurement ●Rate of use of Electronic Manifest System ●Number of media announcements regarding environmental technology development and application projects 	32.6%	34.2%	29.0%	32.4%	35.0% / 34.6%	35.0%
	<ul style="list-style-type: none"> ●Rate of reduction of predicted CO₂ emissions in the building operation stage ●Rate of reduction CO₂ emissions in construction stage ●Decrease construction waste final disposal rate*5 ●Rate of green procurement ●Rate of use of Electronic Manifest System ●Number of media announcements regarding environmental technology development and application projects 	88.9%	88.4%	86.7%	84.6%	85.0% / 86.3%	85.0%
	<ul style="list-style-type: none"> ●Rate of reduction of predicted CO₂ emissions in the building operation stage ●Rate of reduction CO₂ emissions in construction stage ●Decrease construction waste final disposal rate*5 ●Rate of green procurement ●Rate of use of Electronic Manifest System ●Number of media announcements regarding environmental technology development and application projects 	78.2%	74.1%	70.3%	68.0%	75.0% / 95.3%	95.0%
	<ul style="list-style-type: none"> ●Rate of reduction of predicted CO₂ emissions in the building operation stage ●Rate of reduction CO₂ emissions in construction stage ●Decrease construction waste final disposal rate*5 ●Rate of green procurement ●Rate of use of Electronic Manifest System ●Number of media announcements regarding environmental technology development and application projects 	40.0 hours	42.1 hours	42.2 hours	43.8 hours	43.0 hours / 44.6 hours	43.0 hours
	<ul style="list-style-type: none"> ●Rate of reduction of predicted CO₂ emissions in the building operation stage ●Rate of reduction CO₂ emissions in construction stage ●Decrease construction waste final disposal rate*5 ●Rate of green procurement ●Rate of use of Electronic Manifest System ●Number of media announcements regarding environmental technology development and application projects 	26 people	16 people	12 people	6 people	10 people / 11 people	10 people
	<ul style="list-style-type: none"> ●Rate of reduction of predicted CO₂ emissions in the building operation stage ●Rate of reduction CO₂ emissions in construction stage ●Decrease construction waste final disposal rate*5 ●Rate of green procurement ●Rate of use of Electronic Manifest System ●Number of media announcements regarding environmental technology development and application projects 	17 people	10 people	11 people	4 people	10 people / 5 people	10 people
	<ul style="list-style-type: none"> ●Rate of reduction of predicted CO₂ emissions in the building operation stage ●Rate of reduction CO₂ emissions in construction stage ●Decrease construction waste final disposal rate*5 ●Rate of green procurement ●Rate of use of Electronic Manifest System ●Number of media announcements regarding environmental technology development and application projects 	4 cases	2 cases	3 cases	4 cases	0 cases / 2 cases	0 cases
	<ul style="list-style-type: none"> ●Rate of reduction of predicted CO₂ emissions in the building operation stage ●Rate of reduction CO₂ emissions in construction stage ●Decrease construction waste final disposal rate*5 ●Rate of green procurement ●Rate of use of Electronic Manifest System ●Number of media announcements regarding environmental technology development and application projects 	(0.58)	0.81	0.84	0.97	0.95 or below / 0.56	0.85 or below
	<ul style="list-style-type: none"> ●Rate of reduction of predicted CO₂ emissions in the building operation stage ●Rate of reduction CO₂ emissions in construction stage ●Decrease construction waste final disposal rate*5 ●Rate of green procurement ●Rate of use of Electronic Manifest System ●Number of media announcements regarding environmental technology development and application projects 	37.5%	43.6%	35.3%	37.5%	35% or above / 41.7%	35% or above
	<ul style="list-style-type: none"> ●Rate of reduction of predicted CO₂ emissions in the building operation stage ●Rate of reduction CO₂ emissions in construction stage ●Decrease construction waste final disposal rate*5 ●Rate of green procurement ●Rate of use of Electronic Manifest System ●Number of media announcements regarding environmental technology development and application projects 	50.8%	55.9%	48.0%	56.8%	42% or above / 52.7%	45% or above
	<ul style="list-style-type: none"> ●Rate of reduction of predicted CO₂ emissions in the building operation stage ●Rate of reduction CO₂ emissions in construction stage ●Decrease construction waste final disposal rate*5 ●Rate of green procurement ●Rate of use of Electronic Manifest System ●Number of media announcements regarding environmental technology development and application projects 	(94.9%)	(95.6%)	(95.6%)	(95.2%)4.8%	4.7% or below / 4.7%	4.0% or below
	<ul style="list-style-type: none"> ●Rate of reduction of predicted CO₂ emissions in the building operation stage ●Rate of reduction CO₂ emissions in construction stage ●Decrease construction waste final disposal rate*5 ●Rate of green procurement ●Rate of use of Electronic Manifest System ●Number of media announcements regarding environmental technology development and application projects 	39.1%	30.6%	33.4%	36.1%	30% or above / 28.7%	30% or above
	<ul style="list-style-type: none"> ●Rate of reduction of predicted CO₂ emissions in the building operation stage ●Rate of reduction CO₂ emissions in construction stage ●Decrease construction waste final disposal rate*5 ●Rate of green procurement ●Rate of use of Electronic Manifest System ●Number of media announcements regarding environmental technology development and application projects 	81.7%	85.9%	86.4%	91.6%	85% or above / 93.9%	90% or above
	<ul style="list-style-type: none"> ●Rate of reduction of predicted CO₂ emissions in the building operation stage ●Rate of reduction CO₂ emissions in construction stage ●Decrease construction waste final disposal rate*5 ●Rate of green procurement ●Rate of use of Electronic Manifest System ●Number of media announcements regarding environmental technology development and application projects 	32 cases	30 cases	30 cases	41 cases	20 cases or above / 39 cases	20 cases or above

*3 Year Key Performance Indicators (KPIs) Targets

*4 Until 2011, calculated for accidents entailing four or more days off work. From 2012, the target is set on the basis of all accidents entailing days off work, irrespective of the number of days

*5 Until 2013, rate of recycling of construction waste. From 2014, change to Decrease construction waste final disposal rate

Group Company KPIs

TAISEI ROTEC CORPORATION

	ISO 26000 themes 7 core subjects	CSR issues	KPIs	FY2013 results	FY2014 results	FY2015 targets / results	FY2016 targets
G	2. Fair Operating Practices	Improvement in compliance awareness	Compliance training participation rate	100%	100%	100% / 100%	100%
S	3. Consumer Issues	Thorough familiarization with quality control standards and procedures	Ratio of achievement of target score in construction evaluation (number achieved / total number)	34.0%	43.0%	50.0% / 50.0%	50.0%
	5. Human Rights and Labor Practices	Supporting the balance between work and life	Rate of taking refreshment leave (Acquisition time limit 2 years)	44.4%	53.2%	100% / 88.2%	100%
E	6. Labor Practices	Thoroughgoing occupational health and safety management	Frequency rates	0.8	0.5	0.6 or below / 0.3	0.5 or below
			7. The Environment	Proper control of construction waste	Number of times training for prevention of industrial waste accidents was implemented	—	—

Taisei-Yuraku Real Estate Co., Ltd.

	ISO 26000 themes 7 core subjects	CSR issues	KPIs	FY2013 results	FY2014 results	FY2015 targets / results	FY2016 targets
G	1. Organization Governance	Initiatives for business continuity planning (BCP)	Rate of participation in the Large-Scale Disaster Drill	100%	100%	100% / 100%	100%
	2. Fair Operating Practices	Improvement in compliance awareness	Participation rate for e-learning on compliance	—	—	100% / 100%	100%
Measures to prevent information leakage			Rate of implementation of information security measures	—	100%	100% / 100%	100%
S	5. Human Rights and Labor Practices	Support for employees' career development	Participation rate for training	98.2%	98.6%	— / 99.0%	100%
E	7. The Environment	Providing environmentally friendly technologies	Rate of reduction of electrical power usage (office)*	13%	8.4%	1.0% / 9.2%	1.5%
			Number of projects proposing improvement in energy efficiency at customers' facilities	25 cases	47 cases	24 cases / 65 cases	40 cases

TAISEI U-LEC CO., LTD.

	ISO 26000 themes 7 core subjects	CSR issues	KPIs	FY2013 results	FY2014 results	FY2015 targets / results	FY2016 targets
G	2. Fair Operating Practices	Improvement in compliance awareness	Compliance training participation rate	—	—	— / 97.2%	100%
S	3. Consumer Issues	Thorough familiarization with quality control standards and procedures	Rate of return of customer questionnaires	82%	81%	75% / 87%	—*
			6. Labor Practices	Thoroughgoing occupational health and safety management	Number of fatal accidents	0 cases	0 cases
		Frequency rates			0.84	0.00	0.70 or below / 0.55
E	7. The Environment	Promotion of 3R activities	Rate of recycling of construction waste	98%	96.8%	98% / 98.2%	98% or above
			Proper management of construction waste	Rate of adoption of Electronic Manifest	93%	99.4%	98% / 99.4%

TAISEI SETSUBI CO., LTD.

	ISO 26000 themes 7 core subjects	CSR issues	KPIs	FY2013 results	FY2014 results	FY2015 targets / results	FY2016 targets
G	2. Fair Operating Practices	Improvement in compliance awareness	Compliance training participation rate	100%	100%	100% / 100%	100%
			Measures to prevent information leakage	Rate of attendance at information security education	99.3%	99.7%	100% / 100%
S	5. Human Rights and Labor Practices	Supporting the balance between work and life	Rate of return to work from mental health leave	100%	100%	100% / 100%	100%
E	7. The Environment	Comprehensive environmental activities	Rate of attendance at environment related education	74%	87%	100% / 95.7%	100%
			Providing environmentally friendly technologies	Percentage of energy efficiency proposals to customers	100%	98.7%	100% / 76.8%

TAISEI HOUSING CORPORATION

	ISO 26000 themes 7 core subjects	CSR issues	KPIs	FY2013 results	FY2014 results	FY2015 targets / results	FY2016 targets
G	1. Organization Governance	Initiatives for business continuity planning (BCP)	Rate of participation in the Large-Scale Disaster Drills	100%	100%	100% / 100%	100%
			2. Fair Operating Practices	Improvement in compliance awareness	Compliance training participation rate	100%	100%
S	3. Consumer Issues	Thorough familiarization with quality control standards and procedures	Customer satisfaction surveys (promoter survey)	95%	95%	100% / 95%	100%
			4. Community Involvement and Development	Promotion of community contribution activities	Number participating in social responsibility activities	15 people	20 people
E	7. The Environment	Proper management of construction waste	Rate of adoption of electronic manifest	99.3%	99.2%	99.5% / 98.3%	99.5%
			Rate of mixed waste in construction waste	12.6%	10.8%	10.5% / 11.8%	12%

SEIWA RENEWAL WORKS CO., LTD.

	ISO 26000 themes 7 core subjects	CSR issues	KPIs	FY2013 results	FY2014 results	FY2015 targets / results	FY2016 targets
G	1. Organization Governance	Initiatives for business continuity planning (BCP)	Rate of participation in the Large-Scale Disaster Drills	100%	100%	100% / 100%	100%
			2. Fair Operating Practices	Improvement in compliance awareness	Compliance training participation rate	—	—
S	5. Human Rights and Labor Practices	Supporting the balance between work and life	Numbers taking nursing leave and caregiving leave	1 people	2 people	3 people / 3 people	4 people
			6. Labor Practices	Thoroughgoing occupational health and safety management	Number of labor accidents (4 or more days off work)	4 cases	1 cases
E	3. Consumer Issues	Development and providing technologies to solve social issues	Number of technical proposals submitted	8 cases	11 cases	16 cases / 11 cases	12 cases

*As to the rate of return of customer questionnaires, amendment to the targets for fiscal 2016 shall be deliberated