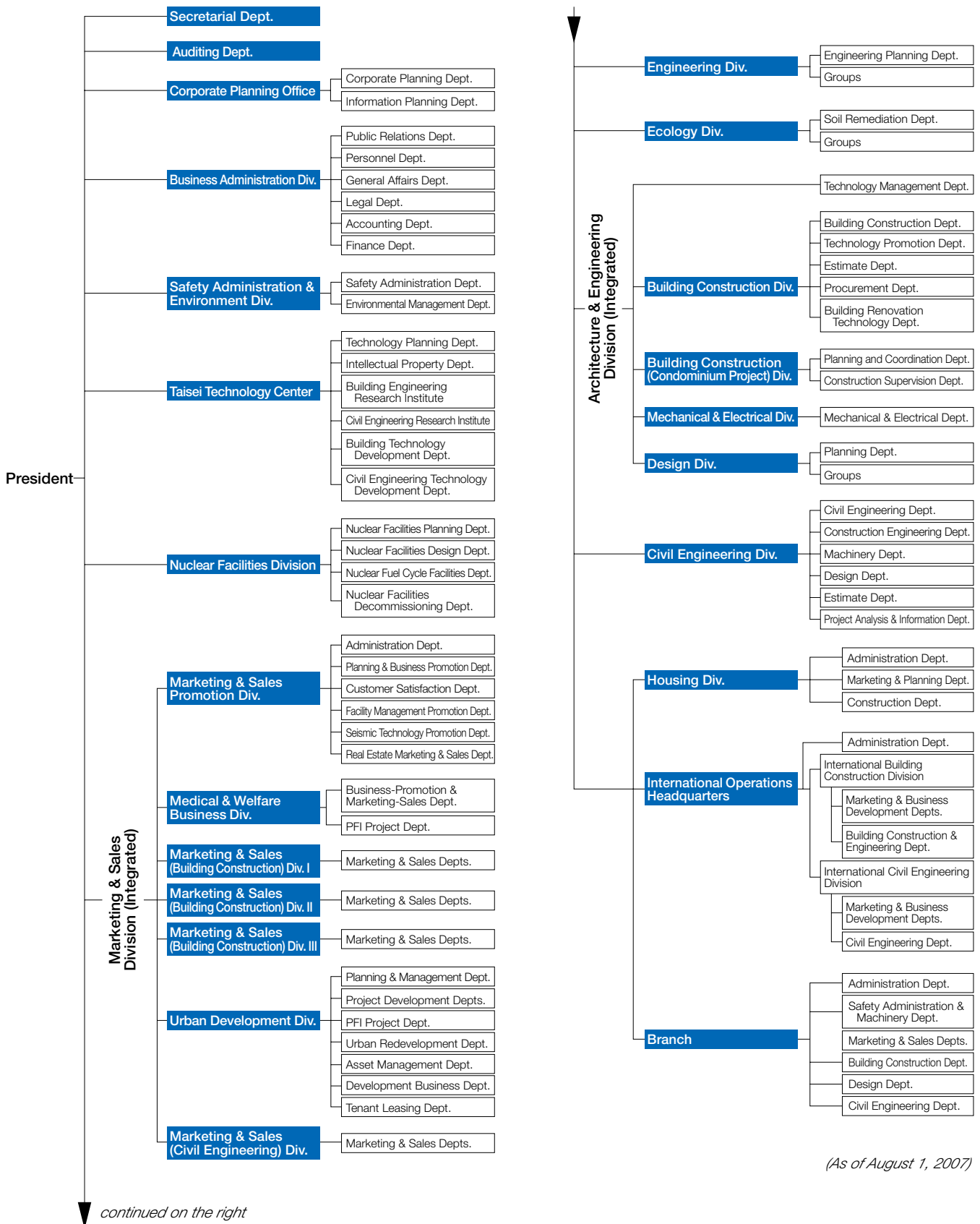


# Organization



Corporate Auditor—Auditor's Secretarial Dept.

# Corporate Data

**Name:** Taisei Corporation  
**Established:** 1873  
**Paid-in Capital:** ¥112,448 million  
**Authorized Shares:** 2,200,000,000 shares  
**Shares Issued:** 1,064,802,821 shares  
**Number of Shareholders:** 99,236  
**Number of Employees:** 9,310

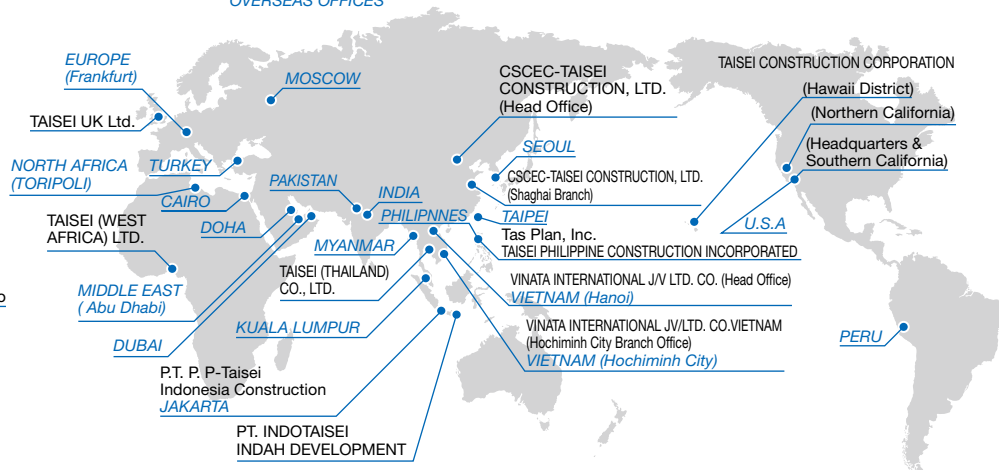
**General Meeting of Shareholders:** The General Meeting of Shareholders is held within three months of the day immediately following the day on which the account is closed.  
**Transfer Agent:** Mizuho Trust & Banking Co., Ltd.  
**Head Office:** 1-25-1, Nishi-Shinjuku, Shinjuku-ku, Tokyo 163-0606  
**Phone:** +81-3-3348-1111

(As of March 31, 2007)

## Domestic Offices:



## Overseas Offices: OVERSEAS SUBSIDIARIES & AFFILIATES OVERSEAS OFFICES



## Major Subsidiaries and Affiliates

COMPANY	LOCATION	PAID-IN CAPITAL	MAJOR BUSINESSES	EQUITY OWNERSHIP
<b>Subsidiaries</b>				
Taisei Rotec Corporation	Tokyo, Japan	¥ 11,305 million	Road construction and construction material sales	58.5%
Yuraku Real Estate Co., Ltd.	Tokyo, Japan	¥ 13,625 million	Real estate sales and insurance	57.6%
Taisei U-Lec Co, Ltd.	Tokyo, Japan	¥ 7,280 million	Construction	100.0%
Taisei Setsubi Co., Ltd.	Tokyo, Japan	¥ 625 million	Servicing of air-conditioning, plumbing and electric installations	100.0%
Taisei Service Co., Ltd.	Tokyo, Japan	¥ 100 million	Real estate management and security	100.0%
Seiwa Renewal Works Co., Ltd.	Tokyo, Japan	¥ 300 million	Construction	100.0%
Taisei Housing Corporation	Tokyo, Japan	¥ 100 million	Housing construction	100.0%
Taisei Construction Corporation	Cypress, CA, U.S.A.	US\$ 41.3 million	Construction	100.0%
CSCEC-TAISEI Construction, Ltd.	Beijing, China	RMB 50 million	Construction	50.0%
<b>Affiliates</b>				
VSL Japan Ltd.	Tokyo, Japan	¥ 100 million	Construction method licensing; sales and leasing of equipment, etc.	22.9%
Taisei Philippine Construction, Inc.	Makati City, Philippines	P 12.5 million	Construction	40.0%